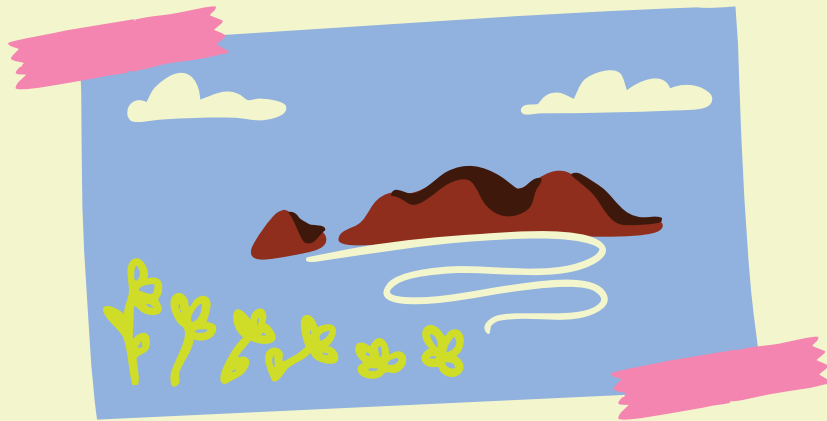


# NOTES from A SMALL island





## 2024 Annual Review

### He ākonga ki ngā ākonga hei ara whakawhiti mā te Karaiti.

Reaching students for Christ,  
changing students for life.

**Editors** Kate Irving & Rachel Turner  
**Designer** Abigail Lim

TSCF's vision is to help students in New Zealand become servant leaders of character through the transforming gospel of Christ. TSCF is a founding member of the International Fellowship of Evangelical Students.

The **Annual Review** is for those who partner with us in our vision and mission to reach students for Christ. It reports on what God has accomplished through TSCF in the previous calendar year, as well as looking to what he is building for the future. This work is made possible by the grace of God and the generosity of our partners. This is a review of the 2024 year.

**TSCF** PO Box 9672, Marion Square,  
Wellington 6141  
+64 4 384 7274  
tscf.org.nz

## NOTES from A SMALL island

As a Wellingtonian, it was somewhat unforgiveable that, until this summer, I had never visited Matiu / Somes Island. Despite seeing it most days on my commute into the capital, I had never made the trek across the harbour to the largest of three small islands in Wellington Harbour.

While I knew a little about the island and its compelling history, it wasn't until I visited that I began to understand its significance in both Wellington and NZ's story. As I meandered round the island, it got me musing on some of its similarities with TSCF.

### A Place of Welcome

For those who've never been to Matiu / Somes Island, you've probably seen it when arriving into Wellington. Whether you arrive by boat, plane or car, the island is one of the first things you see. It stands as an initial place of welcome into our capital.

Each year, around 50,000 new students arrive on our tertiary campuses beginning their first year of studies and a new season of life. We long that TSCF would be a place of welcome to all students arriving on campus, as they await the adventures of their student years. Many arrive with a sense of trepidation and anticipation. Time and again, we have seen that the first few weeks of the student year are significant in setting foundations of faith and explorations in it over the coming years.

Our hope and prayer is that we would give the warmest reception to those who are arriving, and for many, this is at the crucial Clubs Day and Orientation events at the start of each year. We are continuing to think about how we maximise the opportunity these present, and this year's Student Welcome Packs were a great addition to our resources.

### A Sanctuary for Refuge

Matiu / Somes Island is not just a welcoming place, but a place of refuge too. Before European settlement, the island was a base used by Māori for many generations. In a similar vein, our desire is that TSCF student groups are not just a place where students arrive, but also stay, making it their home during their student years. In an age of so much turmoil, TSCF groups are a place where students can safely explore the big questions of life with other likeminded friends. Our hope is that



**Ben Carswell**  
*National Director*

students become part of a local church and make the most of the unique opportunity that a group of students from different backgrounds joining together in student mission affords.

### **A Haven for the Hostile**

During both World War I and World War II, 'enemy aliens'—including long-term residents of New Zealand who originated from enemy countries—were interned on the island and form a significant part of the island's story.

For TSCF, there are people who are hostile to, even 'enemies' of, the gospel. Unlike those who were interned on Matiu / Somes Island out of fear of the harm they might do, TSCF welcomes those who are hostile to what we believe. The idea of those who are aliens and enemies being reconciled to God (Colossians 1:21-23) is at the heart of what we're about. Over the years, some of the exciting stories we hear are those of students who were most hostile to God, but who unexpectedly encountered Him during their student days.

### **A Shelter for the Sick**

In the late 1800s and early 1900s Matiu / Somes Island was used on various occasions to quarantine people who were carrying smallpox, influenza



*Group shot from Summit 2024 in Queenstown*



or scarlet fever. TSCF groups are a place where those who are 'ill' can come: not to be quarantined but to receive life-giving restoration in Jesus.

As Jesus said to those complaining about Him eating with tax collectors and sinners, *"It is not the healthy who need a doctor, but those who are ill. I have come not to call the righteous, but sinners to repentance."* (Mark 2:17)

### **A Light in the Dark**

One of the less obvious features of Matiu / Somes island is tucked away on the Southern side of the island, facing the harbour entrance. In the late 1850s, city leaders in Wellington realised that the harbour had become a busy port and that safe navigation into the harbour required a light. In 1866, the original lighthouse was built and became fully operational. Despite being updated and changed in 1900, a lighthouse still operates on the island, guiding incoming ships to a place of safety.

I'm frequently asked 'what does TSCF do?' Really, the answer is quite simple, and our vision remains the same—we are 'the light of the world.' Together, we let our 'light shine before others, that they may see our good deeds and glorify our Father in heaven.' For nearly

ninety years, TSCF has been shining the light of Jesus, warning of impending danger and helping guide students in the right direction. I remain convinced of the need to keep shining, albeit more brightly in the darkness of the world around us.

### **A Stronghold for Battle**

However, another aspect of the island highlights the reality of TSCF's mission. During World War II, a Heavy Anti-Aircraft Artillery position was established near the summit of the island. A command post and four gun positions were put in place and fifty soldiers were stationed on the island. Although the emplacements were built and ready to engage in warfare, their guns were never fired against enemy warcraft. It can be easy to forget that we are actively involved in a spiritual battle. As a student mission, we are at the front line of enemy warfare, seeking to rescue students from darkness into light. We need to remember our *'enemy the devil prowls around like a roaring lion looking for someone to devour.'* (1 Peter 5:8). Please pray for students and staff, involved in this active spiritual warfare and pray for our protection as we fight in this battle, which has already been won.

### **A Dwelling for Unity and Diversity**

In recent years, ownership of the island has

transferred to a Māori collective, Taranaki Whānui ki Te Upoko o Te Ika, as part of the claim settlements for breaches of the Treaty of Waitangi. As you arrive on the island, a waharoa (carved gateway) demonstrates a commitment to bi-cultural partnership in the ongoing affairs of the island. As we prepare for the bicentenary of the signing of the Treaty of Waitangi, we recognise NZ stands at the doorway of a significant moment in its history. As TSCF, we are committed to and positive about both bi-culturalism and multi-culturalism and continue to explore what those should look like in Christian mission in 21st century New Zealand. One of the highlights of the year was hearing Rev Keri-Ann Hokianga share through waiata, word and haka, the story of Te Rongopai arriving in Aotearoa and the impact of the gospel on our bi-cultural foundations. We want to continue to grow in our reach to all students in NZ and would particularly ask for your prayers to make connections with those in the polytechs and wānanga, where our student witness is currently so small.

### **A Home for a Season**

The island is also a place of great significance for the Te Atiawa people. It is from the island that Ngāti Mutunga departed for the Chatham Islands in 1835. While TSCF is a place where we receive students arriving at tertiary campuses across





NZ, our vision is that it would be a place from which we send students and graduates to the ends of the earth. This past year, as part of our Global Reach strategy, a group of students and staff served as a team in Vanuatu, working with the IFES student movement, Gud Nius Yunivesiti Felosip. We also had IFES visitors from around the South Pacific joining us for our Staff Training, as well as some staff visiting UESI in India and the Lausanne Congress.

The students of today are the graduates of tomorrow and they have the potential to be future leaders in society, communities, churches and countries all over the world. Interestingly, the Island has never been a place of permanent settlement, rather, it is a place that people come to be part of for a time. And in a similar way, our vision is that TSCF students are with us for a season – one that transforms, enriches and prepares them for the life they will lead as graduates beyond their student years. It is as each generation of students transition into the graduate world, that they take our aims of True Witness, Undivided Life, Deep Thought and Global Reach into the working world, their churches, families and communities. We long for life-long investment, involvement and impact.

### A Centre of Learning

Like Matiu / Some Island, which has become a place of scientific learning, we want to be a place of ongoing exploration and discovery. In an ever-changing world, we seek to be creative in our methods of communication, whilst remaining unashamedly committed to being confident and clear in our message of the good news of Jesus. Our continued involvement in the *Mark Drama*, demonstrates the best of this creative communication of the crux of our message. We continue to use it as a brilliant tool for helping students open the pages of Scripture, meet Jesus and engage with all He has said and done. It remains an effective initiative for both outreach and discipleship, which is both remarkably disarming and winsome. As part of our focus on Mark, we are in the process of producing a Mark's Gospel, for distribution and use on campus and particularly to help students read the Bible with unbelieving friends.

At our *Summit Conference*, where we focussed on Mark's Gospel, it was terrific to hear students sharing stories (both 'successful' and 'unsuccessful') of inviting their friends to read and study a Gospel together. It is not rocket science, but is part of our belief that **'faith**



**Top:** Auckland OCF and CU combined outreach  
**Bottom:** The Well residents getaway

*comes by hearing, and hearing by the Word of God' (Romans 10:17).*

TSCF remains committed to 'Deep Thought' as one of our priorities. All too frequently in the church, we 'dumb down' our expectations of engagement with the depth of Scripture. Across TSCF, we continue to engage students in conversations about the implications of their studies and the connections and challenges with the gospel. This commitment to discipleship of the mind is a key distinctive of TSCF and our discipleship of students.

### **An Investment that Multiplies**

For many years, the island had fallen into a state of disregard and disrepair. With the investment of committed supporters, the island has seen an increased commitment to regrowth and revitalisation, particularly through a deliberate revegetation programme. Since the late 1980s, it has been pest-free and in recent years, there has been an increase in the planting of native flora and fauna.

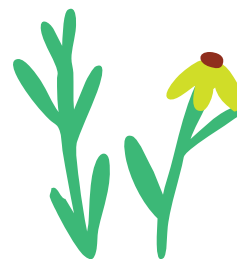
One of the real encouragements of TSCF in recent years has been to see a growth in domestic students involved in and leading our groups. We want to be part of the development of Kiwi student leaders, as well as internationals,

who will go on to spiritually shape our nation and the world, as men and women of influence. As part of this, we have undertaken a review of our MINTY internship programme and made some necessary changes. We're relaunching a graduate discipleship year and calling it *Formation*, which expresses our desire to see students formed into life-long disciples of Jesus.

We have been delighted in recent years, to see a growing sense of partnership with graduates and TSCF alumni, investing into God's Kingdom. Our Board has taken specific steps to examine its work and remit and seek to grow in its governance capability. For years, we have been praying specifically for the work in Auckland, where 'the harvest was plentiful, but the labourers were few'. In the last couple of years, we have seen answered prayer as a growing team has developed, under the leadership of Josh Irving. We give thanks too for a growing number of New Zealanders joining our staff team, bolstered by experienced staff joining the TSCF team from IFES movements overseas. As part of a refreshed strategy, we are seeking to double our staff team size, double the number of students involved in TSCF and double our income in the next five years. There is much still to do, and we remain thankful for everyone who stands together with us in this mission.

At times, writing about what God is doing here in NZ, which to some is just 'a little comma at the bottom corner of the global page' feels like we're sharing just notes from a small island. But as Isaiah 42 commands and reminds us, *"Sing to the Lord a new song, His praise from the ends of the earth, you who go down to the sea, and all that is in it, you islands, and all who live in them...let them give glory to the Lord and proclaim His praise in the islands. The Lord will march out like a champion, like a warrior He will stir up His zeal; with a shout He will raise the battle cry and will triumph over His enemies."* They may just be notes from a small island, but they do share something of our part in bringing glory to God and proclaiming His praise in the islands!

Thank you for your part in God's work.





**Top Left:** Spikeball at AUTCF Leaders Retreat

**Top Middle:** Auckland Student Leaders 2024

**Bottom Left:** Staff and Families 2024 in Bridge Valley, Nelson

**Top Right:** Otago camp 2024

**Bottom Right:** Leaders of the new Unitec Waitākere group



# Auckland REPORT

***“Christianity has transformed me, inside and out. Looking back at the challenges I have faced, I know I couldn’t have overcome them without God.”***



TSCF Auckland enjoyed a wave of momentum in 2024. Across the region’s twelve campus groups, about 200 students were regularly engaged in weekly gatherings. Over 40 of these served as recognised student leaders. Overall, enthusiasm for evangelism grew; students planned more initiatives to reach their friends and fellow students for Christ. We praise God that over half of our Auckland groups saw at least one student come to faith in Jesus and take steps to follow Him.

The year got off to a thrilling start with a new campus group at Unitec Waitakere. As with most beginnings in student mission, it all started with a few students whose faith in Jesus moved them to pray and give something a go! One of those students, Lucia, recalls: *“Back in 2021, my friends and I started praying for a Bible study group at Unitec Waitakere, as we saw a need for Jesus. Fast forward to 2024 and the Student Lounge at Festival One, where I learned about TSCF and asked for support to finally start something on my campus. It took a leap of faith, but God did more than I could have dreamed. I started meeting regularly with some friends on my course and we soon got to meet other students who wanted to know more about Jesus! God has planted a seed on my campus, and I pray it will flourish for many years to come.”*

The Christian Fellowship at AUT North is another seed that God is growing. It’s just two years since the group started, with a penchant both for Spikeball and the Bible, and fruit has begun to emerge. Three leaders joined the existing committee in 2024, making for a team of six student leaders going into 2025. What’s more, a newer member put his trust in Christ and has continued in one-to-one discipleship with one of the leaders. Ting-Wei shares: *“It was my hostel mates who brought me along to AUTCF’s Bible studies. I was hesitant at first, but everyone there was very welcoming, and I started becoming interested in who Jesus is, eager to know Him more. Summit is where I met so many others exploring faith in Jesus, as well as believers; this gave me the courage to trust God and begin to follow Jesus. I returned to campus extra motivated to help on our club stall and invite new people who may not know about Jesus.”*

In recent years, it’s been some of TSCF’s long-established campus groups that have struggled most in Auckland. Here too, however, we have seen heartening progress. For example, UoA’s Overseas Christian Fellowship (OCF) grew from eight students to over twenty weekly attendees, many of whom



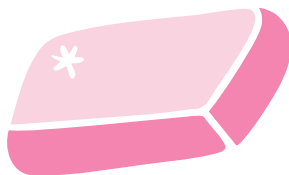
**Josh Irving**  
Auckland Team  
Leader

came with little to no framework for Christian faith but were spiritually open.

OCF's momentum came, in part, from launching *English Corner*, a fun and laid-back English conversation group that runs immediately prior to OCF's main meeting. The aim is to build relationships and show Christlike hospitality, while addressing the need for many international students to practise their spoken English. Sheldon is one of several students who came to check out OCF and *English Corner*. He writes:

*"Christianity has transformed me, inside and out. Looking back at the challenges I have faced, I know I couldn't have overcome them without God. He has given me strength, hope, a new direction in life. I am especially grateful that He brought me to New Zealand, where I've met so many kind and supportive Christian friends. My faith has grown so much, and my recent baptism was a significant marker of God's work in my life."*

While it's students who lead our groups on the ground, TSCF Auckland has benefitted greatly from two new staff. God has sent us Kathryn Millar (up from the Canterbury staff team, now supporting UoA's Christian Union and the Veritas



law group) and Wayne Lam (volunteering at TSCF Massey Albany). Auckland's staff team has thus become twelve, six employed staff and six volunteer associates. This is a tremendous provision for Aotearoa's biggest student city, and an answer to prayers of faithful supporters over many years.

As the staff team has grown, so too has our capacity to connect with, care for, and train our students, and support their involvement in local churches. This feels significant, as so many of our students wrestle with how to live out the gospel in their student years. Naturally, a greater staff presence has also helped to develop a stronger regional identity as part of the wider TSCF whānau; it's no coincidence that this year's *Summit* drew the largest contingent of Auckland students in well over a decade.

Following a few harder years of rebuilding in Auckland, this wave of momentum has been a timely gift. It is God who has sent us such wonderful staff and students, and God who is growing the seeds of faith. May God continue to send workers into His harvest field.



**Top:** OCF dinner, post-Bible study

**Middle:** Massey Albany crew

**Bottom:** Manuscript Bible Study at AUTCF Leaders Retreat

# Waikato/BOP REPORT

## Connecting and Establishing

Our efforts to reach students were pleasing last year. Waikato Uni (UoW) Hamilton students paraded a 'pirate's treasure chest' around campus during Orientation Week, getting plenty of attention. Students could enter to win its contents, and our students followed up with those interested to meet and discuss Christian faith further.

Our start of year *Launch* events were run as separate Waikato and Bay of Plenty events. Held on weekend afternoons, they gave new and regular students time to chat and form connections over games and a meal, as well as sharing about TSCF.

## Deepening in Community, Faith and Friendship

Gatherings on campus remain the mainstay of TSCF groups and is where a lot of Deep Thought happens! Weekly *Home Base* meetings at UoW Hamilton fostered community, and student leaders facilitated Bible studies in Galatians and 1 Peter. Our 2024 Club President Joella McIntosh commented, *"It's been encouraging to see the group grow in numbers and presence. Over 25 people now regularly attend Home Base. We've developed additional events for apologetics and serving students, including pioneering a weekly outreach time."*

In Tauranga, the UoW group studied Acts and *Big Qs about God* over the year. The Toi Ohomai group also met weekly, studying Mark's Gospel together. Our *Community Vibes* evening gatherings allowed students to bond together more, focussing on the critical topic of why we can trust the Bible. Maisie O'Rafferty reflected, *"I felt the TSCF Tauranga group was very supportive of the questions I asked. It's really helped me feel thirsty for more knowledge of God."*

Over in Hamilton an encouraging development was *Foundation Prayer* every Monday morning to start the week. This weekly gathering consisted of worship singing, a Bible devotion, prayers for students present, and for the rest of the campus.

## Reaching the Campus and its Students

To enable greater True Witness UoW Hamilton students developed an initiative called *The Lab... "run on Thursday lunchtimes and dedicated to experimenting with different ways of doing evangelism. We held a number of events including lectures, lunches, science lectures, walk-up surveys, Grill-a-Christian [Q&A forum]."* (Faith O'Hagan, 2025 TSCF Hamilton co-President)

In Tauranga, we continued running monthly



**Dave Hodgkinson**  
Waikato/BOP  
Team Leader

pancake nights in the student hostel near UoW. Along with other UoW students, Michael Watson helped out with these: *"Our monthly pancake nights gave us the opportunity to serve our peers and build friendships, which opened doors for conversations about faith."*

Our *Grill-a-Christian* Q&A forums ran in both Hamilton and Tauranga and had the best turnouts of the year. Three panellists responded thoughtfully to students' good questions, and we provided lunch for students. A second hour for students to chat more openly really helped, once the panel-time finished.

## Participating and Contributing

Thirteen students from our region attended an excellent *Summit* conference. Faith O'Hagan shared on a student panel about how TSCF Hamilton students have approached mission on campus. Students get a lot out of conference, and it was great to see them contribute to their local campus mission experiences to TSCF nationally at *Summit*.

## Blessing and Farewelling

To embody Undivided Life the TSCF Hamilton group partnered with a local church to run *Food Rescue* fortnightly on campus. This initiative gave away free food that was past its best



before date, but still okay to eat. Students had good conversations about meaning, faith and Jesus, even though the event was less overtly evangelistic. Students appreciated it and it was something of a door opener to connect with more students on campus.

Both in Hamilton and Tauranga we farewelled a number of graduates, a good number of whom served God as student leaders with TSCF. We held our first TSCF ball (or at least first in a decade or three!), the result of some excellent collaboration across the Kaimai Ranges. It was a great way to end the year.

### The Work is Bearing Fruit

We praise God that this work is bearing fruit. We rejoiced as a student who read Mark's Gospel with TSCF committed to follow Jesus late last year. We also had several students re-commit to follow Jesus during the year. We know that many students have gone deeper in their faith through our discipleship and evangelism efforts on campus, and we pray for more in 2025!



*To promote Tauranga's Grill a Christian event Club President Amy Burgess accompanied a dinosaur(!) around campus, inviting students to our event, UoW Tauranga campus*



**Top:** TSCF Waikato & Bay of Plenty students and staff at Summit 2024

**Bottom:** Toi Ohomai students meeting: lunch, chats and discussing Mark's Gospel together

# Manawatū REPORT

***“Weekly Bible studies also were continued... These helped students grow in their faith, while also providing fellowship with one another over dinner.”***



**Lorenzo Kokx**  
*Student Leader at  
Massey University*

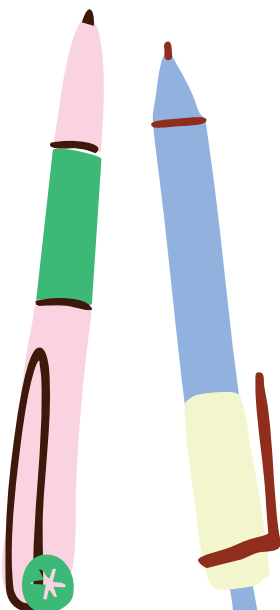
TSCF has always been a partnership between students and staff, as well as local churches. Whilst we want to see students supported by local staff teams, sometimes that is not possible. This year, we unexpectedly had no staff team in the Manawatū, but in God's goodness, His work in the region continued with some real encouragements. Here's how Lorenzo Kokx, one of the student leaders, describes it:

*“Massey University Christian Fellowship had a great year in 2024! The year kicked off with discussions with university students on campus about God during Orientation Week. An arm-wrestling challenge accompanied this, garnering significant attention with many students participating. In the week, everyone who signed up had a chance to win an e-scooter, resulting in considerable publicity for the club, and a very happy winner!”*

*Despite the challenges of not having a staff worker, MUCF continued well, adding prayer meetings once a week. Weekly Bible studies also were continued, now always being student-led. These helped students grow in their faith, while also providing fellowship with one another over dinner.*

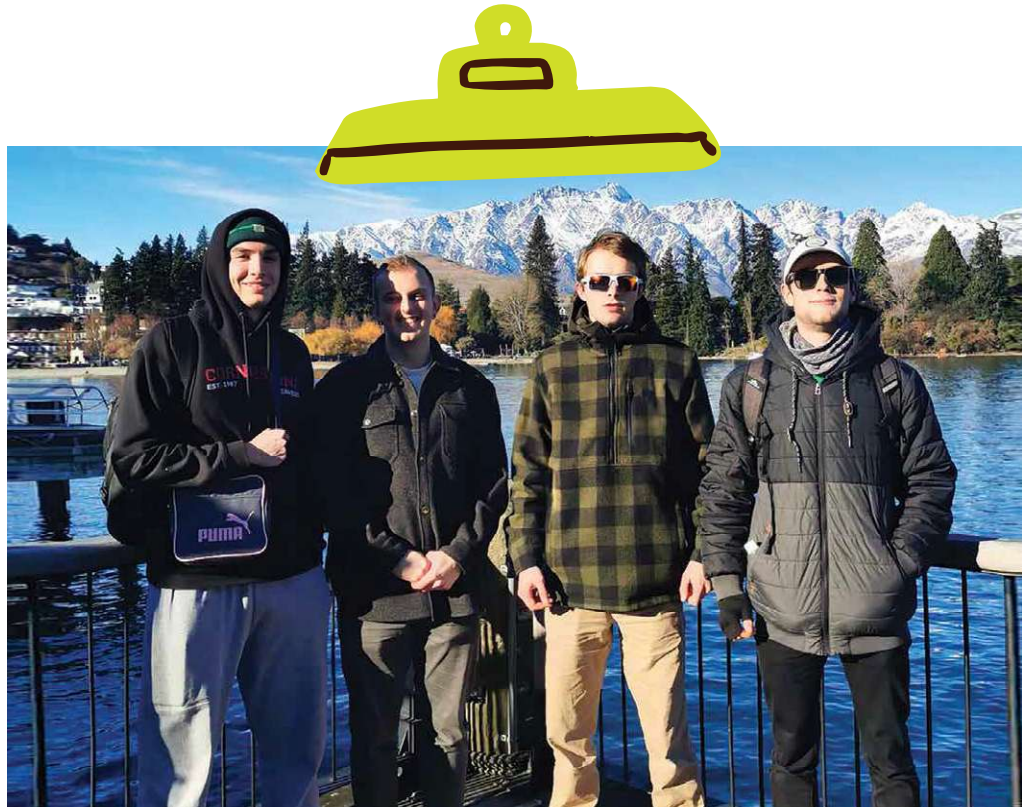
*The club hosted a series of speakers, featuring a range of topics from local speakers, such as Scott Mackay, former TSCF Team Leader, to international speakers. Dr. Luke Barnes, a physicist from Western Sydney University, focused on fine-tuning the argument for God under the topic “Creator or Coincidence”. MUCF also had a record number of members attend Summit. Summit offered a fantastic opportunity for members to grow in faith, learn from other like-minded Christians, and appreciate the awe-inspiring surrounds of Queenstown. The year ended well with the party for all graduating members, which was enjoyed by all.”*

We continue to pray for new staff to serve in the Manawatū region. Please ‘ask the Lord of the harvest, therefore, to send out workers into His harvest field.’ And if you are interested in exploring this opportunity, please get in touch at [personnel@tscf.org.nz](mailto:personnel@tscf.org.nz)





**Top:** MUCF Oweek  
**Bottom:** MUCF Oweek arm wrestling



A few members of MUCF at Summit 2024

# Wellington REPORT



2024 saw the students who were most keenly affected by studying during the COVID years, complete their study and graduate. A new cohort of students arrived with new levels of energy as well as a higher level of interest in being involved in clubs around the university, that hasn't been there since 2020. As a result, a new core group of first year students joined in Victoria Christian Fellowship. The new group were led graciously and ably by Adrienne for the first half of the year as she completed her degree. Adrienne is an example of the fruit of TSCF's commitment to growing student leaders, as we have seen her mature in faith and confidence as a leader, serving wholeheartedly and prayerfully, always pointing people to Jesus in whatever she was leading.

A highlight of the first semester was the hot cross bun giveaway on Kelburn campus just before Easter. Many students were surprised that the group were giving away food which created curiosity about the Easter message among students who received the free buns. Hospitality continued to be a key to gospel conversations as they ran the *Lunch with Luke* series again based on Tim Chester's book, *A Meal with Jesus*, students examined stories in Luke's gospel that are centred around meals Jesus had with people from all kinds of backgrounds and beliefs, always bringing hope and freedom to all He communed with. The second semester provided opportunities to start developing a new team of leaders, preparing them for the task of serving the group into the future with a series of seminars based on Doug Nuenke's resource, *Five Traits of a Disciplemaker*.

Christian leadership training is not just about the skills of leadership, but the character and lifestyle of the leader. Leading by example in a missional group is crucial to the group's commitment to our primary aim. While there were at least eight students invited to consider becoming a leader in 2025, only two agreed to commit to this. However, the others will remain and will continue to be encouraged to grow in confidence and capacity as leaders. Investing in student leadership is critical to the growth of the group. We have only had one part-time staffworker in this region for a couple of years now, so there is less support than is ideal for the Wellington students.

One of the initiatives of the second semester was the *Monday Momentum for Mission* prayer meeting. Students took over leading this and it offered a missional focus to the week ahead praying for their friends and classmates, each other as they sought to live out the gospel in their everyday lives and





**Kim Shaw**  
*Wellington*  
*Staff Worker*

for other IFES groups around the world, growing their understanding of the way God is at work through students like them in very different contexts. This sometimes inspired them for ideas for their own witnessing community or challenged them to be more passionate in their walk with Christ.

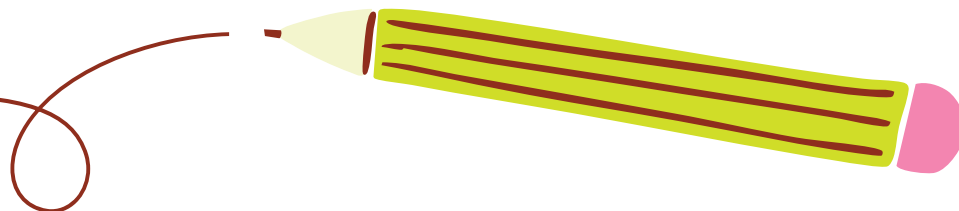
Other tertiary campuses around Wellington, including Massey University and the Polytechnics and Wānanga have not had staff resourcing to facilitate a TSCF group. This gap emphasises the vital importance of staff for supporting the work of students who come and go quickly. Without staff or a supported student leadership team, it is difficult to launch any new groups. This is a key matter for prayer for the Wellington Region, to enable the ministry to grow in the years ahead.



*Victoria Christian Fellowship students gathered for Lunch with Luke*



*VCF-er, Adrienne Malinao, on the student panel at Summit 2024*



# Canterbury REPORT



**Mark Santich**  
Canterbury  
Team Leader



These last twelve months with Canterbury Christian Union have been a great joy and encouragement. As we look back on the year, there is so much to thank and praise God for.

We began the year nervously, with fewer returning students and leaders—but the Lord was at work! Our welcome and social events at the beginning of the year were well attended with more than 50 people attending each Wednesday night. Thankfully God provided some CU grads to come back to serve as small group leaders through this year enabling us to run 5-6 small groups on Wednesday nights on campus.

With our welcome BBQ in the first week of 2024 hosting 70 or so students, and with only 15 CU returnees we knew we had our work cut out for us: we had to pray and trust that God would provide, which he generously did. As the year progressed, Wednesday nights at CU had more than 50 regularly each week in Semester 1. It was evident that God had been at work in people's lives before they started university with around six students joining us who had been believers for less than a year, and another four students who weren't yet believers. Throughout the year there were frequently new people at CU each Wednesday night as students have been inviting their friends to join us, many of whom had never read the Bible before nor knew much about Jesus.

One first-year student joined us in the second half of the year after she was invited by a CU member on her course. She finally came to put her trust in Jesus at the end of the year, which was a huge encouragement. God is amazing and it is always such a privilege to see Him at work in the lives of others.

With so many young, and not-yet Christians we decided to do a six-week series in Genesis 1-12 in Term 2 looking at creation and God's big plans and purposes for His world. Then in third term we did a Bible overview, perhaps slightly ambitiously, but it simply followed the fulfilment of God's promises to Abraham in Genesis 12, following these promises through Israel's history and finally finding their ultimate fulfilment in Jesus. It was super helpful for people to understand how the whole Bible fits together in God's unfolding plan, climaxing in Jesus. We also had some short stop motion videos that summarised each week which were great fun too.



**Top:** A CU life group  
**Bottom:** CU Clubs Day Feb 2024





Since COVID, one challenge we have found is being able to gather students at other times of the week for leadership training. We have started to think creatively about how we can address this in the coming year.

God has also generously provided a great exec team and a new part-time staff member to join serving the CU team in 2025. Jordan Simmonds will join the team for two days per week with the funds generously given by his church. Jordan was a student leader and CU president at Canterbury and has greatly enjoyed serving at CU following six years in the engineering industry. He has helped by meeting with student leaders, training small group leaders and doing short talks at CU. Jordan will also work for his church part-time and serve as a chaplain at a retirement village. Jordan met his wife Clarissa through CU ten years ago. Clarissa has also been helping with CU life groups and, having come from Malaysia, is a great asset in working with international students.

We are also keen to think about how we can engage our campus more deliberately in the coming year too. It has been a super encouraging year, and we have a lot of enthusiasm and energy for 2025!

Please be praying for the University of Canterbury, that students would have many opportunities to hear the amazing news of Jesus and investigate Him further and come to put their trust in Him. Pray for CU that we would work together to help others meet Jesus and grow in Him as we labour together on campus, encouraging one another to grow in Christ as we proclaim His name amongst friends and course mates.



**Top:** Life Groups Term 1

**Middle:** Just an ordinary night at CU with our president Emily

**Bottom:** Welcome BBQ

# lincoln REPORT

***"We want to encourage students to think deeply about their studies and their faith and how these integrate. Our faith makes a difference to all of life. We are seeking to encourage students to ask the question, 'What difference does it make to my studies?'"***



As I reflected on the last year at Lincoln University, there are many encouragements to give thanks for. This year, a focus for Lincoln Uni Christian Fellowship has been reading the Bible 1-1 with their peers. One of the best ways to witness faithfully for Jesus is to bring people to His words and life in the pages of the Bible. However, this can be a real challenge. The greatest obstacle is fear, in all its different forms: 'What if they get offended?', 'What if they ask me something I don't know the answer to?'. There is also the challenge of knowing what to read and how to read it. It has been inspiring to watch students prayerfully work up the boldness and courage to ask their friends. Some students have taken up the invitation and we have seen Bible studies taking place in student cafes throughout the week. Others have declined the offer, and yet the students are not discouraged.

One new emphasis for the Christian Fellowship this year has been trying to reach the international students on campus. Lincoln, surprisingly, is very culturally diverse. Since the end of COVID international students have gradually returned, and there are now more international students than before the pandemic. Many students, particularly from India, Japan and South Korea, come to study at Lincoln. Many come for postgraduate studies, though some have come to do English studies. Unfortunately, the diversity of the campus hasn't been reflected in the Christian Fellowship. This year, there has been a greater emphasis on caring, loving and reaching the internationals. This has included some social events like a bonfire on the beach or board games on campus. One of the best things that we have got involved in is the English conversation class which is run by the chaplains. Many international students learn to read and write English but struggle to speak. The chaplains have been running a class to help students with their conversational English. This has been a great way to meet students and care for them.

A unique element of ministry at Lincoln is *The Well*, and this is where we have seen our aim of Undivided Life lived out. *The Well* is a house which TSCF has been able to build opposite the campus. We seek to have eight students live under the same roof and wrestle through what it looks like to be a Christian and live together, to handle conflicts, to study faithfully, to love flat mates when they're having a hard time. In short, our faith affects our whole life, and *The Well* is a space to seek to apply that. This year has been really encouraging. A huge thank you goes out to Alaina our new TSCF staff and community coordinator at *The Well*. She has done an amazing job praying, caring, and facilitating a healthy culture for those students living here.



**Chris Hay**  
*Lincoln*  
*Team Leader*

We want to encourage students to think deeply about their studies and their faith and how these integrate. Our faith makes a difference to all of life. We are seeking to encourage students to ask the question, 'What difference does it make to my studies?'. This year we have been able to hear from Christian lecturers who have come and shared their stories of how they came to faith and what difference it makes to them as staff and lecturers. It is great to hear from people who have already thought deeply about animal science and faith or sustainable farming and faith, and to model that to our students.

It has been like many years, full of encouragement but also times of discouragement. Students have come to faith, students are exploring the faith, students have grown in their faith and students have rejected the faith. Thank you for your partnership and particularly your prayers, of which I am certain we see the fruit.



**Top:** Lincoln Crew at Summit 2024  
**Bottom:** CF Camp Highbury Park

# OTAGO REPORT

***“The student groups have been growing and rebuilding again, with more opportunities to connect and meet new students, both local and international, Christians and non-Christians.”***



**Simon Sim**  
*Otago Team Leader*

This year, the University of Otago adopted a new Te Reo Māori name alongside its original name—“*Otakau Whakaihu Waka*”, a metaphor meaning ‘a place of many firsts’, alluding to being the first university established in Aotearoa, and speaks of its aspirations and achievements. For students, coming to university or polytech will be the first time that they get to engage and explore the world around them. What if it was also the place where they met Jesus for the first time?

As we reflect on the year, there have been many firsts. This year was the first time since the COVID years that life had returned to campus in a way it hadn’t before. The student groups have been growing and rebuilding again, with more opportunities to connect and meet new students, both local and international, Christians and non-Christians.

One of the firsts this year has been working in partnership with Student Soul, a local student church. In practice, this has meant organising events together, sharing resources, and thinking creatively together about mission on campus. At Clubs Day, we ran a *guess-the-number* competition where students could win a Student Survival Kit. We had an encouraging response from students and connected with a good number of new students interested in joining a Christian group and coming along to our first event, the *Welcome to Dunedin* dinner.

In the second semester, in another first, Student Soul and the Otago Christian Fellowship (OCF) started *Dinner and Alpha*, where we provided dinner and went through the *Alpha Course*—a video series designed for people new to Christianity. We had a couple of new students coming along, and it was a joy to see them engage with the course, ask big questions, and share food together. We even had a student come to faith after coming to *Alpha* and reading Mark’s Gospel one-to-one!

This year, the Christian Medical Fellowship (CMF) welcomed a good number of new medical students to the Monday lunchtime group. Through Bible studies, testimonies, and prayer, CMF continues to be a place where students first encounter the aim of ‘undivided life’—the integrated relationship between faith and vocation, especially hearing the stories and experiences of Christian doctors and lecturers. One particularly powerful moment was hearing the testimony of one of the med school’s favourite professors—who first encountered Jesus after realizing that his success, wealth, and possessions could



not compare with a life of knowing Christ.

The CMF student group is also the place where students first get connected to the CMFNZ national network which supports them through the rest of their medical careers. We had eight students travel up to Christchurch this year for *Reflect*, a conference co-organized by CMFNZ to equip Christians serving in healthcare.

In the Dentistry school, the *Seeking Light* prayer group meets on a Wednesday lunchtime to pray and read Mark's Gospel. This year as a first, the students set up a prayer box in the common room, inviting people to write down prayer requests and to join the group. We got some responses from students and staff! The group this year has been small but engaged, and it has been a joy to read God's Word and pray together each week.

We are excited to see God continue to work in and through TSCF. As life continues to return to campus, we hope and pray that Otago will indeed be a place where many will encounter Jesus for the first time and grow to become his disciples, putting Jesus first.



Clubs day



**Top:** CMF students at Servants Health Centre  
**Middle:** Otago CF at Summit 2024  
**Bottom:** CMF Reflect 2024

# finance UPDATE



We hope that as you have read the 2024 Annual Review you are encouraged by all that God has been doing in and through TSCF in the past year. 2024 was a year in which we saw new groups emerging, students coming to faith, and a substantial increase in participation in our national camp, *Summit*. We are excited to see the ripple effect of this in the coming months and years.

2024 was another year for which to give thanks for God's gracious provision, as careful management of funds and resources helped us to finish the year with a small surplus. This enabled us to begin 2025 with confidence that we could meet our coming financial obligations.

## Income:

- In 2024 we saw an overall slight reduction in income (approximately \$42k) compared to 2023.
- Rental income increased due to a combination of full occupancy of *The Well* and a slight increase in *The Well* and our Wellington office sublease.
- *Summit* registrations also increased as we saw our largest mid-year conference for several years. The growth was in part supported by the availability of scholarships towards registration and travel, which we believe made it feasible for more students to attend. We were really encouraged by this and grateful for the generous gifts that made this possible.
- We saw a small amount of growth in support from overseas, but otherwise our donation giving has declined a little. We recognise that this is in part due to the reality of increasing cost of living for many. Whilst it is encouraging to see this growth in overseas donations, the volatility of the currency exchange does pose a financial risk.
- Overall, the total income for the year was \$1.6 million.

## Expenditure:

- As in previous years, in 2024 we were careful to tightly control our expenditure, so that, despite the increase of costs in many areas, our overall expenses reduced by around \$10k against 2023.
- We were pleased to be able to reduce the mortgage at *The Well* by \$77k, a combination of regular payments and lump sum repayment when we re-fixed. We were able to do this because of donations specifically given towards the property fund. This has helped place TSCF in a much stronger long-term financial position in terms of fixed assets.



- Participation in the global family of IFES: costs surrounding this change each year, depending on the activities taking place in a given year. In 2024, we were able to send a student team to Vanuatu on a *Global Reach Journey* and also hosted a delegation of young staff from around the South Pacific region at the TSCF staff training in October, which reflect some of the costs incurred. Cost of accommodation also increased because of the large *Summit* and because of general increase in fees at campsites around the country. We anticipate this trend to continue in 2025 and beyond.
- Overall, TSCF's total expenditure for the year was \$1.5 million

All of this resulted in an overall surplus of \$64k, reflecting a careful control of income and expenses.

In 2025 and beyond:

- We would love to further our impact by enabling another large delegation of student participants to attend *Summit*. We are excited to be able to offer scholarships again due to continued generosity of supporters, and hope and pray that we can help students be creative in sourcing funding for themselves and their friends to attend.
- We are seeking to produce a NZ published edition of Mark's Gospel. We want to be able to distribute these to students to read with their friends at no cost, and in order to do so will need to raise around \$50,000 to create, design and produce this life-changing resource.
- We will continue to reduce our mortgage at *The Well*, with the opportunity to pay off a lump sum when we refix during the year. All this helps us to return funding directly into student ministry.
- We have been undertaking a full salary review for our staff team over the last few years and will be shifting our staff onto the new system throughout 2025. This is well overdue and, in light of cost of living, means a substantial increase to our overall staffing costs as we seek to care for our staff and their families well. This is a key area of financial challenge for TSCF over the next couple of years, as we seek to grow our staff funding by \$200k.

Please give thanks with us for God's faithful provision of staff and resources to continue the mission. Pray that we would be wise and prudent with all God has given us, and that God would continue to provide all that we need to continue reaching students for Christ, changing students for life, in New Zealand and beyond.

If you would like to support us with any of these funding challenges, please do visit [tscf.org.nz/give](https://tscf.org.nz/give) or write to [tscf@tscf.org.nz](mailto:tscf@tscf.org.nz) to find out more.

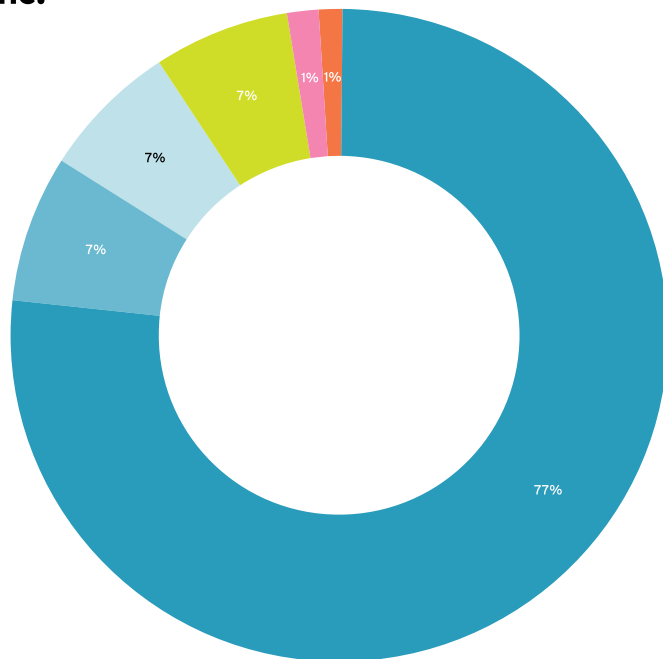
Thank you so much for your continued and faithful partnership in our shared mission to see students of New Zealand transformed by the good news of Jesus Christ.

If you'd like a full copy of the TSCF 2024 accounts please request one by emailing [finance@tscf.org.nz](mailto:finance@tscf.org.nz)



# financial graphs

## Income:



\$1,249,830

Donations from individuals

\$116,562

Donations from churches

\$107,766

Donations by trusts

\$107,519

Revenue from ministry activities and student communities

\$22,457

Revenue from events

\$20,222

Other revenue

| Income   | 2024               |
|--|--------------------|
| Donations  | \$1,474,158        |
| Revenue from ministry activities and student communities | \$107,519          |
| Other revenue  | \$22,457           |
| Revenue from student events                              | \$20,222           |
| <b>Total Income</b>                                      | <b>\$1,624,356</b> |

| The Well: Donations                    | 2024      |
|--|-----------|
| Donations received                     | \$10,410  |
| Remaining mortgage at 31 December 2024 | \$278,855 |

*Donations to The Well are put towards paying down the mortgage, and are not included in the Income graph or table.*

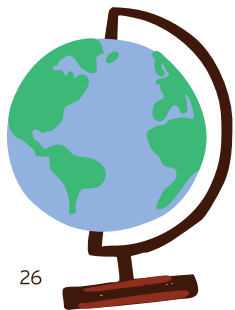
| Expenditure                             | 2024               |
|---|--------------------|
| Programme costs – field staff, expenses | \$1,161,294        |
| Resourcing, leadership & governance     | \$280,697          |
| Student communities                     | \$57,507           |
| Events                                  | \$25,346           |
| Regional activities                     | \$24,068           |
| Scholarships for events                 | \$11,200           |
| <b>Total Expenditure</b>                | <b>\$1,560,112</b> |
| <b>Surplus / (Deficit)</b>              | <b>\$64,244</b>    |

| Looking Forward: Some Key Projects in 25/26 |           |
|---|-----------|
| Gospel Project                              | \$50,000  |
| Mortgage for The Well additional payment    | \$35,000  |
| Staff expenditure restructure               | \$200,000 |

*If you would like a copy of the annual accounts please email Anita Nolan, Finance Manager at [anitan@tscf.org.nz](mailto:anitan@tscf.org.nz)*

# Global REACH

*"This same Good News that came to you is going out all over the world. It is bearing fruit everywhere by changing lives, just as it changed your lives from the day you first heard and understood the truth about God's wonderful grace."*  
**Colossians 1:6**



We have seen a significant growth in engagement with international students and TSCF groups this year. As students have reached out with intentional kindness and hospitality to international students it has created curiosity about what motivated this caring attitude.

Group members in Hamilton and Canterbury have begun reading the Bible with their international friends. We praise God for some new believers and pray for the continued transforming work of the Spirit in their lives. Christian international students also add strength to our mission when they come with a missional mindset.

*"Pemphe arrived from Malawi early 2024 to Waikato University and quickly became regularly involved in TSCF Hamilton. He attended TSCF's national conference, stepping out in faith to stay with Kiwi students in Christchurch and grabbing a car ride to Summit in Queenstown - seeing snowy winter scenery on the way. At TSCF Hamilton's end-year retreat, Pemphe took on the role of 'International Students champion' and it is hoped this will help the group reach out to international students more in 2025!" (Dave Hodgkinson, Waikato / BOP Team Leader)*



**Kim Shaw**  
*Global Reach  
Coordinator*

Last Easter, *Global Reach Journeys* returned from hiatus as we sent a team of five students and two staff to Vanuatu to connect with the IFES movement there, Gud Nius Yunivesiti Felosip. We are grateful to Joel and Tiffany Atwood who hosted our team so generously, reflecting the overall impression students had of all the Ni-Vanuatu people, especially Christians, as people of generosity and joy. *"It helped put into perspective the true value of things, and that God shaping your heart has way more value than anything money could buy"* (Danielle Brown – MUCF). Seeing new aspects of God's creation in the diverse nature and culture deepened their love for God, recognising that everything He has created reflects the Creator in some way.

TSCF has a long history of partnership with IFES in India and Ecuador. With the handover of CECE's national leadership from our NZ partner, Ruth Hicks, to Guadalupe Muñoz, we have committed to maintaining this relationship with reciprocal invitations given for visits between TSCF and CECE staff and students during the year ahead. After a lapse of some years of personal connections in India, two TSCF staff visited in November to re-establish the relationship and pave the way for future meaningful partnership and friendship, enhancing the work of both UESI and TSCF.

The third student cohort of *The Crossing*—a Global Reach Initiative gave themselves intentionally to growing in their understanding and development of intercultural communication and friendships. Each webinar drew on the wisdom and experience of leaders from our mission community. We were also able to hear monthly reports of opportunities to have gospel-centered conversations with their peers. This really spurred the group along.

*"I was so much more encouraged and motivated around missions on campus during and after The Crossing... I also gained some very different perspectives around missions, faith, gospel-sharing, and the Christian walk which I really appreciated... My traditional ideas of mission were changed quite radically!!" Selau (Christian Union, Auckland)*

At our *Summit Mission Expo* students talked and engaged in conversations about next steps in their walk with Jesus, sharing the gospel cross-culturally within New Zealand and overseas contexts. Hearing the buzz and seeing the animated interest that the students gave to these conversations was so encouraging.

We trust these seeds that have been planted will bear fruit around the world in the years to come.



*From left to right: Pastor Shem Tamara, Chaplain of Onesua Presbyterian College, students Emilie Boeke, Danielle Brown, Adrienne Malinao, Liam Hunter, Natasha Ah-Hing and Rossie Caleb, Principal of Onesua Presbyterian College in Vanuatu*

# Meet the Team

## Staff Team



**Alaina Eckert**  
Lincoln & The Well



**Ben Carswell**  
National Director



**Caitlin Ormiston**  
Chief Operating Officer



**Chris Hay**  
Lincoln



**David Hodgkinson**  
Waikato/BOP



**John Riley**  
Finance Officer



**Josh Irving**  
Auckland



**Kate Irving**  
Communications Manager



**Kate McClelland**  
Lincoln



**Katie Knight**  
Auckland



**Kim Shaw**  
Wellington/  
Global Reach  
Coordinator



**Kathrynn Millar**  
Auckland



**Lance Knight**  
Auckland



**Mark Santich**  
Canterbury &  
True Witness  
Coordinator



**Mike Doragh**  
Systems &  
Projects



**Nadine Liddle**  
Waikato



**Renee Santich**  
Canterbury



**Robyn Drake**  
Auckland & Head  
of Resource  
Development



**Simon Sim**  
Otago



**Tim Hodge**  
Head of Training  
& Development



**Wilma Reinders**  
PA to National  
Director

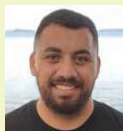
## Associate Staff



**Ani Kartikasari**  
Lincoln



**Annette Lane**  
Auckland



**Dwayne Tongamohenoa**  
Auckland



**Hanli Liu**  
Auckland



**Jeff Lane**  
Auckland



**Mei Rideout**  
Wellington



**Nick Goodwin**  
Waikato



**Timothy Marshall**  
Otago



**Wayne Lam**  
Auckland





TSCF and IFES South Pacific Staff at Staff Training 2024

#### **FAREWELLED**

Alice and Zach Smith  
Bena Tanielu  
Ian Reid  
Leisha Rhianon  
Morna Lorden  
Michael Drake

#### **WITH THANKS TO**

Rachel Turner  
David Lawson

#### **OVERSEAS**

Ruth and Josue Hicks  
Olmedo (CECE Ecuador)

#### **BOARD 2024**

Janice Cheng (Chair)  
Ben Carswell  
Dennis Fountain  
Paul Trebilco  
Paul Windsor  
Rachal Aspinall  
Roger Moses  
Tom Broughton

#### **PRESIDENTS & VICE PRESIDENTS**

Andrew Becroft (President)  
Andrew Saunders  
Animoa Goold  
Efeso Collins (1974 - 2024)  
Geoff Troughton  
Hilary Hague  
Jessica Palmer  
Rubee Yee  
Stuart Lange



**Top Left:** Lincoln Barnabas Fund  
**Bottom Left:** Massey Albany club stall

**Top Right:** Auckland staff leaping for joy  
**Bottom Middle:** Missions Expo at Summit 2024  
**Bottom Right:** Hamilton student leaders inviting busy students to STOP and chat





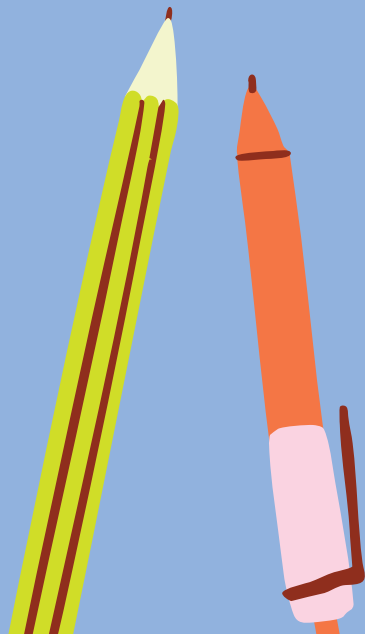
**Top Left:** Unitec Mount Albert Science and Faith event  
**Bottom Left:** Hamilton's Home Base Bible study



CU Castle Hill trip

**He ākonga ki ngā ākonga hei ara  
whakawhiti mō te Karaiti**

Reaching students for Christ,  
changing students for life.



@tscf.nz



tscf.org.nz



@tscf.nz