

ENDURANCE AND HOPE

2020 Annual Review



He ākonga ki ngā ākonga hei ara whakawhiti mō te Karaiti.

Reaching students for Christ,
changing students for life.



Editor
Bex Allen

Designer
Rachel Hay

TSCF's vision is to help students in New Zealand become servant leaders of character through the transforming gospel of Christ. TSCF is a founding member of the International Fellowship of Evangelical Students.

The **Annual Review** is for those who partner with us in our vision and mission to reach students for Christ. It reports on what God has accomplished through TSCF in the previous calendar year, as well as looking to what he is building for the future. This work is made possible by the grace of God and the generosity of our partners. This is a review of the 2020 year.

TSCF

PO Box 9672, Marion Square,
Wellington 6141
+64 4 384 7274
www.tscf.org.nz

LESSONS FROM ENDURANCE



Ben Carswell | National Director

The year was 1914. The dark clouds of World War I were gathering. Ernest Shackleton, a young Antarctic explorer, was preparing to lead the Imperial Trans-Antarctic Expedition, attempting the first land crossing of the Antarctic continent via the South Pole. His plans were grand, the task huge and the potential glory, great. But deep in the Antarctic Ocean the plan was halted, and his mission changed.

Shackleton and his crew of 27 planned to sail their ship *Endurance* through the Weddell Sea to the Antarctic Peninsula, where their land crossing would begin. However, before they reached land, *Endurance* was trapped, then crushed in an icepack. Within a few days their grand plans were irrevocably changed, and new challenges awaited.

The similarities with our situation over a century later in 2020 are striking. For TSCF, and indeed much of the world, COVID-19 has resulted in aborted journeys, changed plans and reframed missions. As we look back on the past year, it's clear we are at a seminal moment in history.

Navigating the uncharted paths of our COVID response, I have repeatedly been reminded of Scripture and Shackleton and encouraged to learn from both. As the Māori whakatauki says,

"Ka mua, ka muri" meaning "Walking backwards into the future;" we learn from the past as we head into the future.

An Ambitious Vision

Shackleton's plan was simple, yet bold and ambitious. Preparations were made, a team assembled and a goal established – to achieve the first land crossing of the Antarctic continent.

As TSCF, our vision is also simple, bold and ambitious. We want to see students across NZ being transformed by the gospel of Christ and becoming servant leaders of character. We want them to be shaped by Biblical convictions, integrating faith, study, work and life, bringing cultural renewal to NZ's tertiary institutions. Our mission is to reach students for Christ and change students for life.

A Changed Plan

Just weeks after departure, *Endurance* was surrounded by packed ice "different...from anything encountered before," and unable to move. For the crew of *Endurance*, the realisation they were beset came very slowly, like a creeping resignation. Within weeks, Shackleton made official what they had all come to accept – they would have to winter on board *Endurance*. No-one could have foreseen the disastrous chain of events that

had brought them to their predicament – unseasonable gales, changeable weather and sub-zero temperatures. As the months went on, the grim reality became apparent: their ship was trapped, would be crushed, and sink. When the time came, Shackleton simply said, "She's going, boys. I think it's time to get off."

Throughout this obvious disappointment and immediate danger, Shackleton maintained a realistic perspective. Their ship was gone, but they were still alive. They had three boats to aid them and supplies to keep them. All was not lost, though everything had changed. Later, as Shackleton and his crew faced the realities and choices of their situation, he asked the question: "Can we stay where we are?"

As 2020 began, it was terrific to see TSCF's vision outworked. Encouraging numbers of students gathered at our Student Lounge at Festival One, then at various Launch events, Orientation Weeks and Clubs Days on numerous campuses. The mood amongst students and staff was buoyant.

However, it soon became clear that things were going to change. Within weeks of our first COVID case in NZ – a virus different from anything encountered before – a global pandemic was declared, our borders closed, community transmission occurred and NZ went

into Level 4 lockdown. After a promising start to the year, student meetings had to go online, Easter camps were cancelled and Summit, our national conference – due to take place in Queenstown – became an online event. Large numbers of international students stayed away or returned home. Student ministry began to look radically different.

As we adjusted to “the new normal,” students and staff learned the upsides and downsides of an online existence. Outreach became much harder, with difficulties creating meaningful connections with new students. “Zoom fatigue” meant students who spent all day watching lectures were less inclined to join an online TSCF meeting. The challenges were real, but our mission remained. Student ministry had changed, but it had not ceased.

One year on from the start of the pandemic, we can feel the strong temptation to maintain the status quo and stay safe. It is good to ask the same question that Shackleton asked his men: “Can we stay where we are?” We surely answer with a resounding “No!” We consider which changes we must keep and which changes must still be made to adapt for the future. Though we have had times of forced inactivity, we cannot remain inactive forever. We must move forward with hope in times of uncertainty.

A United Team

Shackleton’s genius was leading a diverse crew to live and work together in harmony,

despite their marked individuality. He wanted people who shared his vision and enthusiasm for exploration. His focus was on the one thing that gave them the best chance of achieving their goals – unity, not uniformity. In the face of crisis, this team of 28 were able to pull together to achieve the unthinkable. Shackleton was convinced their best chance of reaching safety was to remain together. It required leadership, teamwork, humility and hard work.

TSCF is a team of students, staff, supporters and churches working together to be the mission arm of the church reaching students for Christ. We are all part of something bigger. We have heard much about NZ’s “Team of 5 million,” where every member plays their part. In TSCF, our team is nearer 5,000, but nevertheless, every person plays their part, and we are thankful to each one. As Romans 12:4–5 says: “Just as each of us has one body with many members, and these members do not all have the same function, so in Christ we, though many, form one body, and each member belongs to all the others.”

Despite a challenging year, one of the encouragements has been to see our team united

“CAN WE STAY WHERE WE ARE?”

and working together to achieve a common goal. The complexities of lockdown, restricted campus access and prevailing uncertainty have brought a fresh reminder of our need for collaboration and connectedness in our mission. Though at times we feel our isolation as a distant island nation, we have no need for isolation in our mission at home.

Our situation in NZ remains so different from much of the world. While we have experienced distance from many of the grim realities of the global pandemic and enjoyed freedoms as a result, we know many of our IFES friends around the world are suffering immensely. Just before the true scale of the pandemic was realised, I had the privilege of visiting CECE Ecuador,

where I joined Ruth Hicks (TSCF Graduate and CECE’s General Secretary) to speak at their national camp. Over the past year, Ecuador has suffered on a scale unimaginable for those of us who are largely protected from the virus. Whilst our situation is much better, we must not forget others whose lives are in turmoil because of the pandemic.

A Challenging Task

For Shackleton, his initial goal was ambitious. No-one had ever completed a land crossing

of Antarctica. However, when *Endurance* was trapped and eventually sank, his task became even more dangerous; they could not stay where they were indefinitely.

The voyage of three lifeboats across 160 kms of icy sea was perilous, but their only option. Shackleton and his crew navigated themselves to Elephant Island, a place remote, uninhabited and rarely visited. Then Shackleton and five men sailed one of the lifeboats, the *James Caird*, 1300 km to the island of South Georgia. For two-and-a-half weeks they faced a prolonged struggle with heavy seas and hurricane-force winds. It was nothing short of a miracle that they made it to land.

Landing on the south side of the island, they faced 40 kms of challenging, unexplored interior to reach potential rescuers at the whaling station of Stromness. By day and night they crossed the mountainous terrain to reach civilisation, risking life and limb, with no map to guide them.

Through these journeys, Shackleton’s crew faced the constant strains of danger, fatigue, ice-cold conditions, frostbite, wind, rain, snow and storms. Their endurance was immense and their sacrifices great.

As TSCF we have been through challenging times in 2020. When the Level 4 lockdown was first announced, we were unsure of the financial implications. We were aware supporters’ circumstances may change and the



Shackleton's crew near the "Endurance"
Credit: Scott Polar Research Institute, University of Cambridge

ability to financially partner with us may be affected. We applied in good faith for the government's COVID-19 subsidy. Thankfully, we were able to return it in full, as the drop in income we experienced wasn't near the 30% required.

The challenges have not simply been financial. The uncertainty of regional disruptions and restricted campus access have made it more difficult to plan or grow our student groups. For many, the impact of the pandemic has taken its toll mentally, physically and spiritually. It appears these challenges may be with us for some time yet. The sacrifices by so many have been great. Paul's description in 2 Corinthians 6 of "great endurance; in troubles, hardships and distresses" is apt. But our story is one of God's goodness and grace.

A Creative Edge

Through the many challenges, Shackleton

and his crew showed a willingness to embrace creativity. Shackleton took the modern step of pre-selling the rights to stories, photographs and film of the expedition. When it was clear *Endurance* would not survive, he showed flexibility and adaptability, creatively using their resources to achieve the rescue they needed. When faced with difficult choices that required creative solutions, Shackleton's attitude was, "We'll try it!"

The ongoing challenges of 2020 have taken us back to essentials, and encouraged us to try new ways of doing things. Student creativity and flexibility have come to the fore. Zoom and social media have been our allies, allowing us to creatively adapt events to be held online. We tried online outreach events, which helped us in hosting Summit 2020, our first ever online conference; we had the largest number of students attend in recent years! We also held our first online AGM, enabling

participation from supporters across NZ and the world. Creativity and a "We'll try it!" attitude are part of our DNA.

An Enduring Hope

Shackleton's leadership was characterised by his continued optimism despite some of the bleakest circumstances. He showed courage, positivity, cheerfulness and patience. He realised that without hope, his crew would perish. At times that hope must have seemed misplaced. But he kept a balanced sense of realism, pragmatism and optimism. As he later said, "In trouble, danger and disappointment, never give up hope. The worst can always be got over." He understood the situation, but he recognised the hand of Providence protecting and guiding them, observing that at times it felt like they had an extra person with them.

Whilst COVID-19 certainly limited our activities on campus, it didn't abort all opportunities. In Otago, the planned Mark Drama took place during Level 2 restrictions (limited to 100 people, all appropriately physically distanced). Despite fewer activities taking place over the year, a small number of students made a commitment to follow Jesus as Saviour and Lord. We pray they would grow deep roots that bear fruit in years to come.

As I write, the uncertainty of COVID-19 and its longer-term implications continues. Our borders are closed to most international students, and the possibilities of further lockdowns and restrictions remain.

When Shackleton left Elephant Island for South Georgia and the hope of rescue, he left Frank Wild, his right-hand man, in charge of the remaining crew. Each day, Wild would wake the men with the words, "The boss [Shackleton] may come today!" Our enduring hope is in one who does not disappoint. We look forward, awaiting the day he returns, but until then, we endure and persevere. As Romans 5:2-4 says, "We rejoice in hope of the glory of God. Not only that, but we rejoice in our sufferings, knowing that suffering produces endurance, and endurance produces character, and character produces hope."

Despite these challenges, God has been good to us, and in his kindness he has been at work and provided for all our needs. As Paul writes to Timothy, "God's Word is not chained," or as our friends at CECE, Ecuador have put it, "The gospel is not in lockdown."

I find great encouragement in the final words of Acts, where Luke tells us that Paul, who for two whole years had been in "lockdown" alone under house arrest, with just a soldier to guard him, "proclaimed the kingdom of God and taught about the Lord Jesus Christ – with all boldness and without hindrance!" (Acts 28:30-31). May we face the future with endurance, enjoying the opportunity to proclaim the kingdom of God and teach of the Lord Jesus Christ boldly and without hindrance! 🙌

AUCKLAND



Robyn Drake
Team Leader

"May the God of hope fill you with all joy and peace as you trust in him, so that you may overflow with hope by the power of the Holy Spirit." (Romans 15:13)

Our theme verse (above) at Launch, where forty new and returning students gathered in February to kick off the academic year, proved to be a great prayer for the uncertain days ahead. As one student reflected, "It's a great way to fellowship with other Christians at Uni and get prepped for the year ahead." Another said, "The first two talks on practically living out your faith and your testimony [were most helpful]. I will definitely apply the lessons I gained there."

Moving into Clubs Days, one of the highlights was the TSCF groups at the University of Auckland working together to run a welcome event, to which over 80 students came. It was a real blessing to have a couple of weeks of meeting in person before lockdown started, which enabled new people to

be welcomed and small groups to establish before switching to meeting online.

Aware of the lack of routine with online learning, for the first few weeks of lockdown we held online daily devotions for students for just half an hour every weekday morning. These became a highlight for some students, and a way for students from different campuses to meet and support one another.

There were some real disappointments last year, with the second lockdown forcing the cancellation of much-anticipated Mission Week events at two campuses. Some of the groups also struggled due to Zoom fatigue, not being able to meet in person socially, and difficulty finding new leaders because they couldn't get to know younger members.

But there were real joys as well: A student at the MIT student village becoming a Christian; evangelism training leading



to students becoming more enthusiastic evangelists; and Sola Scriptura's move to a public space enabling connection with more students.

Hanli, one of Auckland's associate staff, gives another example of how we've seen God at work despite the disruptions: "The Unitec TSCF group had no students attending at the start of the second semester, likely due to COVID and all its disruptions. However, in hope I still went to the chaplaincy building every week. Three weeks in, there was still no sign of any students. I sat in the chair and prayed, 'Lord, give me at least ONE student to meet with this semester'. Not more than 20 minutes after this prayer, a middle-aged Muslim student poked his head in through the door! He said he had never seen the chaplaincy door open and was curious who was inside. So I said, 'I'm inside and I'm holding

a Bible study! He ended up being very interested in the Bible and we spent the next 2 hours talking about Christianity and Islam."

Michael, another associate staff member, reflected the feelings of the Auckland staff team in his summary of the year, "The year... highlighted...the way God used isolation and plague to help us find new ways of caring for one another, sharing the gospel and seeing students grow in Christ. But it also highlighted the place of mutual support and fellowship on campus – something that I had almost taken for granted but now come to with renewed commitment."



WAIKATO & BAY OF PLENTY



Dave Hodgkinson
Team Leader

God is with us in and through all things. This is a key truth our students had a great opportunity to learn this year, particularly as a result of the COVID-19 pandemic. So much has happened since COVID-19 entered the world's vernacular in early 2020. Despite everything, God is still with us, an ever-present help in trouble. As Psalm 46 declares, "God is our refuge and strength."

The study year began fairly normally, with campus Orientation

Weeks, Clubs Days and our regional Launch event – all seeking to make connections with students in the crucial first weeks. Then COVID-19 hit, changing everything for everyone.

It's easy to focus on the frustrations and difficulties 2020 placed on us. However, despite the challenges and limitations of lockdown, physical distancing and enforced online learning, I've been encouraged at how our TSCF groups responded and

adapted campus ministry to keep reaching students for Christ.

The pandemic gave us the opportunity to think differently about campus mission. Our Hamilton-based student leaders took their Colossians Bible studies online, opening these up to TSCF students in Tauranga and beyond. Our Bible studies prompted much discussion and Deep Thought, and our end-of-meeting prayer times became more honest and Global Reach-focused – particularly as we heard the struggles of other IFES groups in countries we have strong links with, such as Ecuador, India and Italy.

I have been learning the ebbs and flows of student ministry. After a vibrant group developed at Tauranga's Toi Ohomai Institute of Technology in 2019, it fell away this past year, largely in response to COVID-19 disrupting campus life.

On the upside, lockdown gave us the opportunity to formalise the TSCF group on Tauranga's new University of Waikato CBD campus, following some small beginnings in 2019. Through networking to raise awareness, we held online meetings, sharing the ethos and vision of the group, as well as photos and stories. It was God's timing: we established a base membership, ratified our constitution and invited students to prayerfully consider serving on the inaugural leadership committee.

All these things may seem small steps, but they are a key part of how TSCF groups have functioned for decades in New Zealand.

The last meeting in early June was a joy – we were finally able to meet in person again! We elected five students onto our leadership committee, laying the foundation for campus ministry in the second semester.

True Witness continued through and after lockdown. We took our national Summit conference online and held a Waikato/Bay of Plenty hub, which met in Cambridge. We participated in national online events that TSCF hosted – talks by Michael Ots and Professor John Lennox – to engage in Deep Thought about the pandemic, and questions it raises about God, life and meaning.

The second semester was a lot more normal. With new leadership teams at Waikato University's Hamilton and Tauranga campuses, we re-started in terms of encouraging, mentoring, training and equipping a new group of students to lead others. Studies in Semester Two focused on understanding the gospel and looking into the parables of Jesus.

Nadine Liddle, Nick Goodwin and I continue to work closely with students to disciple them well, encouraging them to engage in campus mission amongst their peers by living undivided lives as faithful followers of Jesus. 🙌

Bay of Plenty & Waikato students at their end-of-year beach day

MANAWATŪ



Scott Mackay
Team Leader

During a year of uncertainty and frustrated plans, it's been important to focus on the firm truths of the gospel. As Paul summarises in 1 Timothy 3:16:

"He appeared in the flesh, was vindicated by the Spirit, was seen by angels, was preached among the nations, was believed on in the world, was taken up in glory."

From this brief summary, it's clear our mission to proclaim Christ flows directly from his incarnation, resurrection, appearances, and ascension. The most natural response to the gospel is to announce it to the world. That continues to be the heartbeat of TSCF groups in the Manawātū.

In student ministry, Orientation can make all the difference. In 2020 the TSCF team at Massey Palmerston North did a fantastic job at a giveaway campaign during Orientation Week and Clubs Day. We made contact with 550 new students and over 70% of these expressed interest in finding out more. This created a wonderful opportunity for

outreach, and led to many meetings with students to share the good news. Around a dozen students joined evangelistic Bible studies on campus and at least two came to faith in Christ during the year. We also saw around 60 new Christian students come along to activities on campus in the first few weeks.

The Manawātū groups launched a multi-pronged approach to True Witness in 2020. OCF started an "Explore Group" for international students who are new to the Bible, which continued online during the disruptions of Semester One. Several students engaged in one-to-one evangelism with friends or contacts made during Orientation. Another initiative was a public talk on the topic "Does God Belong on Campus?"

A key strategy for True Witness was launching a group in the residential halls at Massey. As well as meeting weekly to pray and study the Bible, this group ran some "Grill A Christian" events in



different halls. The idea of "Grill a Christian" is to present the gospel in the context of a provocative Q&A session. The Christians invite their friends from the hall, consume pizza, and listen to a short introduction, before the guests are invited to "grill" the presenter with their toughest questions about Christianity. The news of Jesus is clearly explained as well as the challenge to respond.

The growth of our student leaders in Deep Thought and Undivided Life has been facilitated by new Core Training. Each week students share stories from campus mission, take turns answering tough questions about faith, and engage in a training seminar given by staff. We've out-grown the room we were allocated in the Chaplaincy Centre, so we're looking for somewhere bigger in 2021! We also hosted an online day-conference during lockdown on the doctrine of the Trinity and

its implications for the Christian life.

Our capacity for Global Reach and engagement with international students remains largely unknown as we look ahead to 2021. OCF has lost some momentum over the last few years, and we are looking to rebuild this group. There have been some promising connections made with the Pasifika student community, which we pray will bear fruit.

One encouragement has been the closer relationship between CF and OCF, including the formation of a combined leadership team at the end of 2020. This has led to a lot more collaboration between domestic and international student leaders. This was seen especially at our combined Graduates Party, which celebrated the contribution of graduating students and the ways they've made an impact for the gospel at Massey. 🍷



WELLINGTON



Matthias Loong
Team Leader

Hot Topics

What happens when you ask students about the current issues and big questions of life that concern them? They won't hesitate to tell you! This year Vic CF students from our theology and ethics group requested we tackle hot topics such as racial justice, cannabis, euthanasia, the relationship between faith and works, and violence in the Old Testament, just to name a few.

In this particular group, we

approached the subjects we studied biblically, theologically and evangelistically. To my surprise, students kept coming, with new people being added over the course of the trimester. It was incredibly rewarding to see them stretched and confronted by God's Word on these difficult but important issues.

In our Vic CF Bible study group we started with a series on "The Heart of the Gospel," in which we looked at a different aspect

of the gospel each week. We also looked at what the scriptures have to say about our mental health. This group consisted of a number of students from diverse spiritual backgrounds, which brought various challenges and joys.

In our missional group, focusing more specifically on the gospel and evangelism, we looked at what it means to live a life of gospel generosity even as "poor" students.

During lockdown we continued all our groups online. I was surprised to see the students coming along each week even though everyone was screen-fatigued. We had the option to continue online after lockdown. However, we all preferred to meet in person – nothing beats face-to-face!

Health

In terms of challenges, this is a year that keeps on giving. Max Rideout, our associate staff worker, was diagnosed with a brain tumour and is receiving treatment for this. Staff and students have been incredibly shocked and saddened by this news. We thank God that surgery to remove the tumour went well. He has since been on the difficult journey of radiotherapy and chemotherapy.

What is clear to all of us is Max and Mei's tremendous trust in God's goodness to them in spite of all that's happened. They firmly have their hope in God and the resurrection

to come. Our thoughts and prayers are with him. We praise God for his example of faithfulness.

The end of 2020 has brought closure to our residential community, Rongopai. This year brought a host of challenges, including the pandemic, which hasn't been helpful when trying to establish an intentional community. As such, we made the call to end this chapter and re-allocate resources to other ministry structures in the region. We give thanks to God for the significant way this flat has served and formed students over the years.

Hope

One of the lessons we took away from online ministry is that it is fairly simple to invite international Christian apologists as guest speakers. Wellington students really appreciated gathering in a local hub to watch the evangelistic event with Professor John Lennox, and the chance to hear him respond to their questions. We look forward to more of these events in the future and will no doubt lean into this online ministry space.

Campus culture will keep changing, but our call to campus mission will not. In this age of uncertainty, the clear message of the gospel is needed more than ever. May God grow the work of his gospel on campus. And may this message of hope take root in all who find it. 🌱

CANTERBURY



Mark Santich
Team Leader

What an unexpected year 2020 was! Throughout this year people have used a number of phrases to try to encapsulate the enormous impact the global pandemic has had upon our lives. One of these phrases described 2020 as an “unexpected year.”

Here at the University of Canterbury it feels like we have had a number of “unexpected years,” as we live through the anniversaries of the earthquakes and the shootings. The global COVID-19 pandemic is just a further reminder that we live in a world that raises big questions, and that we humans aren’t as in control of our world as we like to pretend.

Like most of the world, on campus with Christian Union this has been a year of “adaptability” and “creative opportunity.” After meeting more first years and new students at Orientation than we have in previous years, we were unable to follow up these new contacts as we

would have hoped; with lockdown moving university online it was difficult to develop new relationships.

CU continued to meet online as a larger gathering, in smaller groups and one-to-one to look at God’s Word together, and to build community through prayer, reading the Bible and playing online games of varying quality!

As a movement we tried many new things online, such as the two national evangelistic events (Michael Ots and Professor John Lennox, both from the UK), our mid-year national conference, Summit, with in-person regional student hubs, and our TSCF AGM.

Holding these events online made it easier for students to join in, especially since we could gather in local groups and the events were free. It was encouraging to have 25 or so students from UC at Summit, and around 100 people gather at the



Undercroft on campus to watch the event with Professor Lennox online, with some good discussion afterwards.

Our local conference planned for April eventually happened on campus in August, with many graduates providing the food for us. This reflects the greatest encouragement of the year – strengthened partnerships in the gospel. Being forced into social isolation, both from the world as a country, and from one another in our communities has actually resulted in the strengthening of relationships within our CU community. Many of our CU members have spent more time together socially, and we also joined Lincoln CF for a bonfire and laser tag. This year has also unexpectedly strengthened our fellowship with TSCF groups around the country – even through gathering online.

A year of great challenges has also resulted in many encouragements. The greatest of these has been a couple of students, who are new Christians, growing immensely through difficult times. Along with these students, each one of us at CU has been repeatedly reminded of our great need to trust God, remembering that he is always in control and always provides hope – something we have seen repeatedly here in Christchurch over the last 10 years. And this is a hope we can offer to the world around us, to people who are struggling to find hope in such an unexpected year.

So bring on 2021, God will continue to do great things as we humbly trust him. 🙌



LINCOLN



Kate McClelland
Team Leader

I remember sitting on the sunny lawn in front of the university library. It was 25 March, the day before lockdown, and we were having a final student leadership team meeting. We met outside for the fresh air and dragged together a handful of large wooden picnic tables, so that all seven of us could sit at least one metre apart from one another.

None of us knew what was in store. From that lunchtime meeting, one student would

drive north, catching the ferry to head to his family farm in Hawkes Bay. Another would drive south to her farm out of Mosgiel and yet another would be staying on campus in the halls. We didn't know how long lockdown would be – whether we'd be seeing each other again in a few weeks, or a few months.

Despite not knowing what we would be leading the CF community through, we were greatly encouraged by one of

the student leaders, James, who made a comment in our meeting that stuck with me over the days and weeks to follow:

"This doesn't change the fact that we are a community of Christ-like servant leaders reaching students at Lincoln University through the transforming gospel of Christ. We're still here to love and care for each other!"

These words gave me hope, and strengthened the staff and student leadership team at a time when being physically distant brought frustration to what is usually a very in-person ministry!

In some ways, lockdown brings a smile to my face, with memories of continuing our usual Wednesday lunch meeting, but instead of turning up for a free sandwich, bringing my leftovers from the night before to a Zoom screen. One student even called from her tractor as she was feeding out to the animals! We played online games together, as we chatted away through video calls. We shared videos on Facebook of our testimonies, as an encouragement and witness to one another and the wider campus community. Each week we had a new online challenge ranging from push-ups and artwork, to Tik Tok dances. We heard stories of and prayed for others around the world. These activities continued to keep us connected to one another – our Lincoln CF way of loving and caring for one another.

The connections formed online helped us as we came out of lockdown and back into a somewhat new rhythm on campus. There was enthusiasm and momentum for meeting together again in person, so we kicked things off with our annual camp which we had hoped to hold earlier in the year. After limited opportunities to meet new people or even gather with the existing CF community, camp was an excellent opportunity to invite friends, grow in our relationships with one another and spend time in God's Word. This allowed us to be equipped and encouraged for his ministry at Lincoln for the remainder of the year.

Though I speak fondly of 2020, it hasn't been without its challenges. Because lockdown occurred so early in the university year, it was difficult to engage with and meet new students. Even in Semester Two when we were back on campus, many lectures continued online and the campus was no longer a thriving metropolis, with students choosing to study from afar or at home.

Despite the challenges of the year, we give thanks that God was at work at Lincoln University. We are greatly encouraged that the community of students continues to reach students through the transforming gospel of Christ. We are indeed a community learning to love and care for each other; long may that continue. 🙌

OTAGO



Simon Sim
Team Leader

In 2020 we had to ask ourselves some challenging questions: What does student ministry look like in extraordinary and unexpected circumstances? How do we continue to reach students for Christ? What is God doing in the midst of a COVID-19-stricken world?

As we reflected on the year, we were reminded of these words from Winsome Parnell, one of the members of our local TSCF Support Committee: "We need to make sure student witness continues in the midst of this crisis." The mission has not changed. God is still at work.

Continuing

Student witness continued during the five or six weeks of lockdown, as groups met online each week. The Overseas Christian Fellowship (OCF) studied the book of Haggai together, while the Varsity Christian Fellowship (VCF) studied the Gospel of Luke. The Christian Medical Fellowship (CMF) invited speakers to join their online meetings and share

on various topics. Though online groups remained small, it was encouraging to see students meeting around the Bible and being a source of community and fellowship for one another, especially for those who were isolated from their usual communities and scattered across the country during lockdown.

During a year when many plans did not happen, in August we were grateful for the opportunity for student witness to continue through the Mark Drama. Across three performances we had around 200 people attend. We were encouraged that the best turnout involved us maxing out at 100 people under Alert Level 2; we even had to turn people away!

This year was our first in the new residential community, Harbour Light Base. We have had to learn to be an intentional community while obeying the guidelines set out by our Government. During lockdown, 16 out of 23 students stayed at Harbour Light Base



(split into three separate bubbles), and continued with the rhythms of community living, with shared meals and spiritual practices. We have witnessed God at work, as residents have grown deeper in their faith in Jesus and in their relationships with one another through living together in lockdown. We hope and pray God will continue to use Harbour Light Base as a place of community, spiritual formation, and outreach next year.

Challenges

The 2020 year has brought new challenges. The effects of the pandemic have been felt in many ways. Due to the timing of lockdown, we have not had as much opportunity to connect with new students and first-years. We have also missed new international students who bring vibrancy and diversity to our campuses and groups. We have seen the toll that lockdown has taken on students,

particularly on their studies, mental health, and well-being. Some subject-based student groups struggled to keep going due to the changing demands of their study schedules and course requirements.

Despite all this, student witness has continued under God's guidance, grace, and provision. We are grateful for the staff team. We welcomed Michael Bresler as a staff worker following his completion of Minty, and Penelope Keast as associate staff. We are grateful for the student leaders who stepped up to the challenges and served faithfully. We are grateful for our supporters and partners who share our vision for student witness and enable it to continue. Most of all, we are grateful to our God and Saviour, Jesus Christ. In the midst of this crisis, student witness continues because this is God's mission, and he will see us through. 🙌

FINANCE UPDATE



Caitlin Ormiston
Chief Operating
Officer

The year 2020 is one we are unlikely to forget in a hurry. From border closures to lockdowns, to moving lectures (and the whole of life) online, COVID-19 has made its mark on global history. I suspect the impact will be seen for many years to come. Yet the good news that Jesus is the hope for all the world has not felt more relevant in most of our lifetimes. It is helpful to be able to reflect on the year gone by – all God has done and continues to do through tertiary ministry in NZ and around the world.

Last year as I wrote our 2019 financial report we were unsure what sort of impact COVID-19 would have on TSCF's ministry, or indeed our finances. In March the World Health Organisation declared the outbreak of the coronavirus (COVID-19) a global pandemic, and two weeks later the NZ Government declared a State of National Emergency.

Soon after NZ headed into Level 4 lockdown, the Government announced its wage subsidy scheme, which companies could apply for if they anticipated a decline in income of at least 30%.

On the advice of our finance committee, we applied and received the subsidy in April. As per the terms of agreement with the board, we placed the funds in a separate account, holding them there for the three-month period from April to the end of June when we re-assessed our income. We were pleased to find that our income had only reduced by 12% in comparison to 2019, and in July we returned the wage subsidy in full, including interest.

I am thankful to God for his graciousness to us, that although we saw a level of decline in our income, by the end of 2020 this was only around a 4% drop compared with the previous year, and we were still able to finish 2020 with a small buffer of approximately \$59,000. Of this total, \$35,000 is general ministry funding and \$24,000 is restricted funding for The Well Project.

The income TSCF received over the past year has enabled us to continue with ministry, even in this much-changed environment. As you will have read in



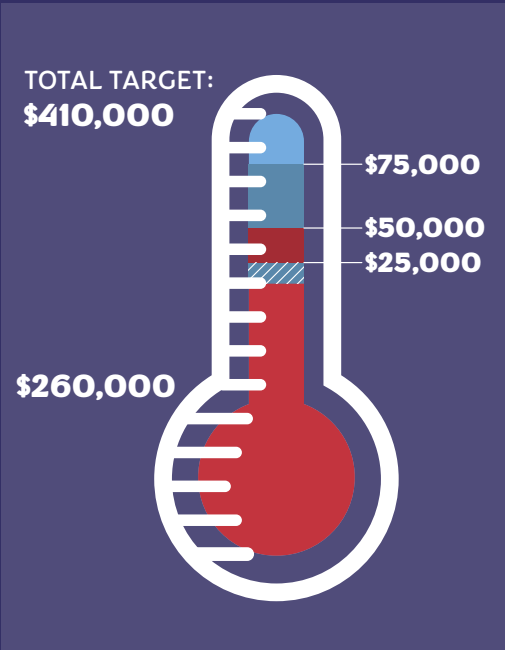
the reports from around the country, this included running outreach events online, both locally and nationally, and in-person regional events. Critically, the funding received by TSCF has enabled staff to continue supporting students around the country as they have faced continued uncertainty around lockdowns and studying online. Staff and students also came together to create an online version of our annual conference, Summit, built around the theme "The Heavens Declare," taken from Psalm 19. It was great to be able to put on events like these and continue investing in students across the country, despite the challenges of COVID-19.

Despite finishing 2020 with a small buffer, the decline in income has made budgeting for 2021 more difficult. We would love to see our income grow as we dream and develop further ministry opportunities and innovations. We are conscious of working to balance our financial situation. On one hand, we have

been able to retain a small cash reserve over the past three years which now means we can be more confident in approaching the coming year, should the situation continue, and the financial position of our supporters suffer as a consequence of COVID-19. With prudence and good stewardship, and moving ahead with caution, we hope that the ongoing deficit budget will not be a burden to the fellowship. In all things we continue to look to God for his wisdom and guidance. Please join us in prayer as we seek the Lord's provision to continue his work amongst students in Aotearoa.

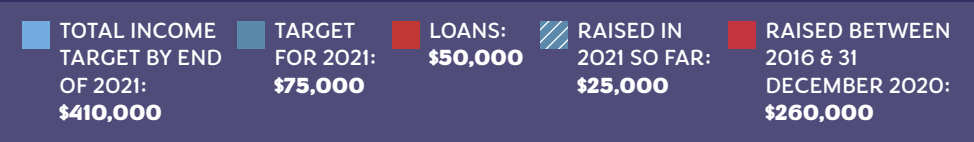
Thank you so much for your partnership with us in the gospel. As we look back on 85 years of ministry we also look back on 85 years of faithfulness from God's people to support and uphold the ministry he has laid before us, in prayer and in finance. Praise the Lord for all the lives he has reached over that time! 🙌

THE WELL PROJECT



The Well Project, our planned accommodation for a residential student community in Lincoln, is still progressing. We are in the final stages of seeking building consent and hope to begin building soon, so the first students could live together from the start of 2022. Please join us in praying for the final details to come together, for continued financial provision, and that we would keep seeking the Lord's direction for this project. For more information, please visit tscf.org.nz/TheWell or contact The Well Project Lead, Tim Hodge, at tim@tscf.org.nz.

INCOME & EXPENDITURE	2020
Past funds on hand	100,422
Donations and interest	99,556
Loans received	50,000
Expenditure (building design)	74,577
Funds on hand	175,401



TSCF INCOME

INCOME	2020	2019
Donations	1,587,816	1,648,769
Revenue from core activities, events and student communities	290,430	288,948
Total income	1,878,246	1,937,717

The bulk of TSCF income comes from donations received from individual supporters, partner churches and trusts. A portion is also generated by core activities, events such as our national Summit conference, and student residential communities. The majority of these funds are spent directly on the costs of the project they are generated from, or on related projects.

TSCF EXPENDITURE

We have broken our expenditure down into five key areas:

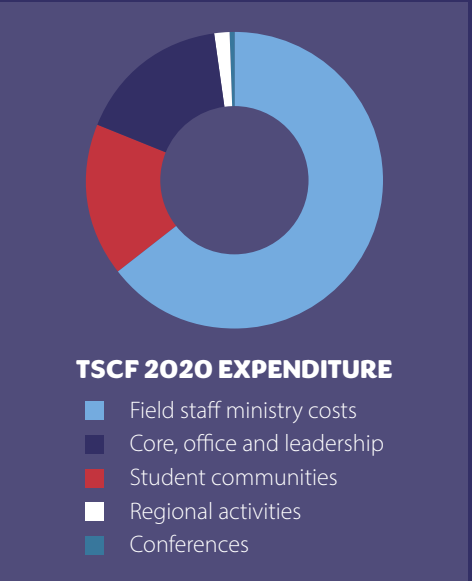
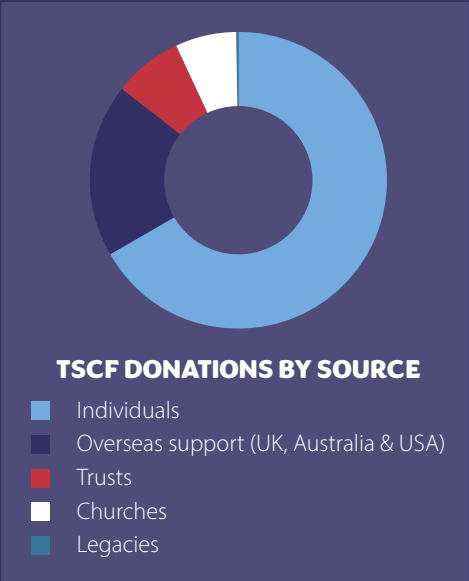
Staff Support – Approximately 64% of our annual expenditure, these funds enable staff to work with students on the ground, as well as contributing to the national vision and strategy of TSCF.

Student Communities – TSCF's student residences exist to provide Christian community living and intentional gospel-focused community. The expenses relate to our rental of the residential properties, as well as community activities, pastoral support and training events.

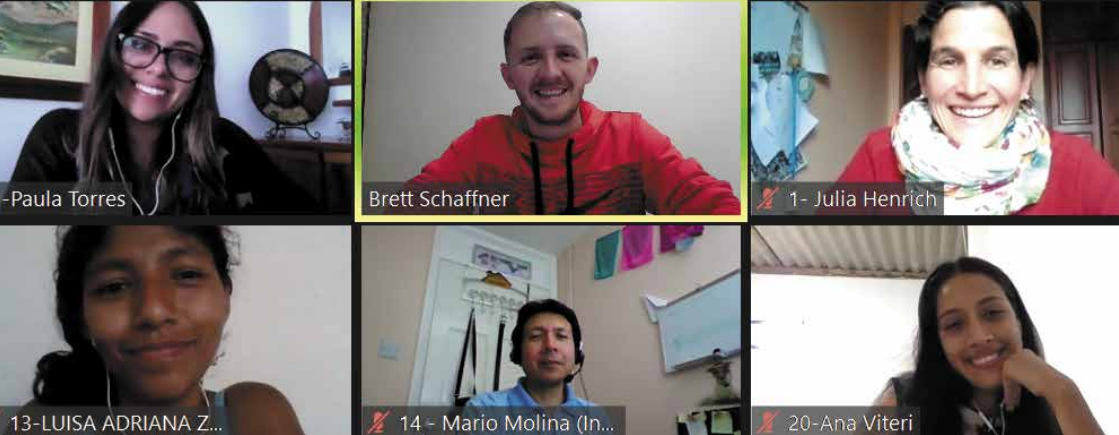
EXPENDITURE	2020	2019
Staff support	1,188,648	1,301,869
Student communities	309,998	223,926
Core, office and leadership support	308,605	294,549
Regional activities	30,514	24,705
Conferences	5,601	20,698
Total expenditure	1,843,365	1,865,747
Surplus	34,881	71,970

Core, Office & Leadership Support – This includes governance and the administration required to run national projects and events, and the resourcing of field staff for ministry.

Conferences – Costs significantly reduced in 2020 due to the necessity to move most events online.



Note: The figures on these pages are provisional, subject to audit. If you would like a copy of our full financial reports when available, please contact John Riley, Finance Officer – johnr@tscf.org.nz.



UPDATE ON CECE, ECUADOR

Over the past year, Global Reach for TSCF has focused more on supporting our partners overseas. We actively partner with CECE in Ecuador, where Ruth Hicks from NZ is the General Secretary. Ecuador has been profoundly affected by COVID-19. Ruth shares an update here, with requests for prayer.

"All classes have been online since March 2020, and will continue to be for the foreseeable future. A higher percentage of students are excluded from the option of university study, either through lack of access to a stable internet connection in rural areas, or not having a computer. Also, many are not able to pay fees due to the deepening economic crisis.

Many CECE students, staff and graduates have lost family members to COVID. The impact of not saying goodbyes and no possibility of communal mourning impacts many. Walking with and caring for grieving staff and students, and the impact of extended COVID restrictions on mental health is challenging.

PLEASE PRAY FOR:

- Comfort and provision for those processing the loss of loved ones, and the ongoing impact of COVID with overloaded hospitals, and little hope of vaccines in the near future.
- Groups that have struggled to stay connected (Loja and Ibarra).
- The mission partners to support three interns we have beginning to serve for a year in April."

TERTIARY STUDENTS CHRISTIAN FELLOWSHIP STAFF

NATIONAL STRATEGY TEAM  Ben Carswell National Director  Tim Hodge Head of Training & Development  Caitlin Ormiston Chief Operating Officer  Mark Santich True Witness Coordinator & Canterbury Team Leader  Kim Shaw Global Reach Coordinator					NATIONAL BOARD: Dennis Fountain (Acting Chair) Ben Carswell (National Director) Tom Broughton Janice Cheng Aimee Mai Roger Moses Bruce Robertson Yvonne Sng Ronji Tanielu Paul Windsor	
NATIONAL LEADERSHIP TEAM  Robyn Drake Auckland  Dave Hodgkinson Waikato/BOP  Scott Mackay Manawatu  Matthias Loong Wellington  Kate McClelland Lincoln  Simon Sim Otago  Chris Hay Minty  Bex Allen Communications						
NATIONAL RESOURCE TEAM  Mike Doragh Systems & Projects  Vicky Chang Administrator  John Riley Finance Officer  Nicole Kwon Financial Assistant  Maggie Barker PA to National Director  Rachel Hay Graphic Designer  Jeff Lane Auckland  Nadine Liddle Waikato					STAFF WORKERS  Geoff Robson Canterbury  Renee Santich Canterbury  Michael Bresler Otago  Rosie Sim Otago  Ian Reid Special Projects  Annette Lane Auckland  Bena Tanielu Auckland  Hanli Liu Auckland	
ASSOCIATE STAFF  Michael Drake Auckland  Steve Turner Auckland  Nick Goodwin Waikato  Robert Hunt Manawatu  Max Rideout Wellington  Mei Rideout Wellington  Ani Kartikasari Lincoln  Penny Keast Otago						
FAREWELLED STAFF  Candy Grice Auckland  David Bruner Auckland ASW  Gareth Jones Auckland ASW  Peter Boyd Auckland ASW  David Beukes Lincoln ASW					VICE PRESIDENTS: Andrew Becroft (President) Jonathan Boston Efeso Collins Val Goold Hilary Hague Jessica Palmer Andrew Saunders Paul Trebilco Geoff Troughton Rubee Yee STUDENT COORDINATORS: Melissa Hennessy (2019-2020) Daniel Sim (2018-2020) Zara Zafar (2019-2020) OVERSEAS STAFF: Ruth Hicks (Ecuador) Zach & Alice Smith (Italy)	

CECE Instaproxi training workshop



Find out more about our staff and their regions on our website.
tscf.org.nz



Reaching students for Christ, changing students for life.
He ākonga ki ngā ākonga hei ara whakawhiti mō te Karaiti.



tscf.nz www.tscf.org.nz tscf.nz